

# 2020 ANNUAL REPORT

**SAND COUNTY FOUNDATION**

**\* EMPOWERING LANDOWNERS | ADVANCING A LAND ETHIC \***



YODER FARMS, 2020 MISSOURI LEOPOLD CONSERVATION AWARD RECIPIENT \* PHOTO: KARI ASBURY



**SAND COUNTY FOUNDATION INSPIRES AND EMPOWERS A GROWING  
NUMBER OF PRIVATE LANDOWNERS TO ETHICALLY MANAGE THE  
NATURAL RESOURCES IN THEIR CARE, SO FUTURE GENERATIONS  
HAVE CLEAN AND ABUNDANT WATER, HEALTHY SOIL TO SUPPORT  
OUR GROWING FOOD DEMANDS, PLENTIFUL HABITAT FOR WILDLIFE  
AND OPPORTUNITIES FOR OUTDOOR RECREATION.**

## Dear Friends

Resilience is front and center in the world of agriculture and conservation. American farmers, ranchers and forestland owners showed us in 2020 that they represent the very definition of resilience. In the face of adversity, they not only continued to grow food and fiber; they found new ways to improve water quality, soil health and wildlife habitat for the benefit of all of us.

Resilience took on new meaning for Sand County Foundation in 2020. As a growing organization with an expanding body of work, we achieved great things while overcoming the challenges of COVID-19 and the loss of our beloved founder, Reed Coleman.

Thanks to you, our team discovered new ways to engage landowners in conservation-minded land management. Our on-the-ground research expanded while our outreach and network of partners grew. We also added impressive new talent to our staff.

2020 presented obstacles and unexpected opportunities to advance conservation on working land. We couldn't have done it without your support.

Thank you!



**Lynne Sherrod**

Chairman  
Sand County Foundation



**Kevin McAleese**

President and CEO  
Sand County Foundation



## Sand County Foundation

was built more than 50 years ago on an idea advanced by Aldo Leopold, America's foremost conservation thinker and author of "A Sand County Almanac."



Leopold inspired landowners to adopt what he called a **"land ethic"** - a moral responsibility to treat land, water and wildlife with respect.

Today, most of the land in the contiguous U.S. is owned and managed by farmers, ranchers and foresters. Sand County Foundation is inspiring and enabling a growing number of them to become conservation leaders who ethically care for soil, water and wildlife habitat while they work the land.

Here are some of the ways we help landowners express their land ethic.



### ROTATIONAL GRAZING

Planning when and where livestock graze improves soil health, improves drought resiliency, and enhances feed production.

### PRAIRIE & BUFFER STRIPS

Native vegetation amid crop fields reduces erosion, and attracts pollinators and other wildlife.

### NO-TILL OR CONSERVATION TILLAGE

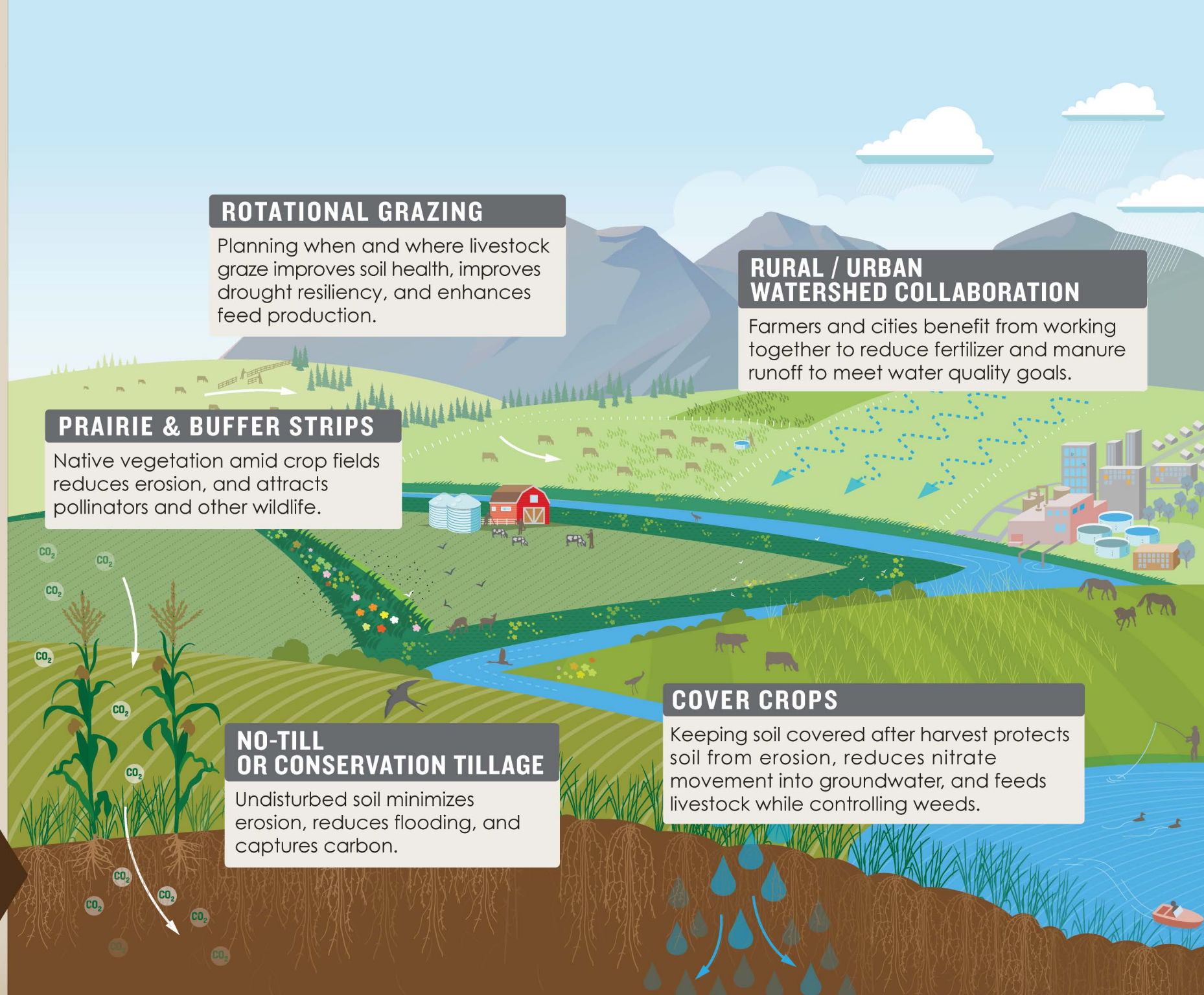
Undisturbed soil minimizes erosion, reduces flooding, and captures carbon.

### RURAL / URBAN WATERSHED COLLABORATION

Farmers and cities benefit from working together to reduce fertilizer and manure runoff to meet water quality goals.

### COVER CROPS

Keeping soil covered after harvest protects soil from erosion, reduces nitrate movement into groundwater, and feeds livestock while controlling weeds.



## Where Sand County Foundation comes in...



### INFORM

We research, demonstrate and share practical, scientifically-sound conservation methods that can improve water quality, soil health, habitat and a landowner's bottom line.



### ENABLE

We seek policy innovations to scale up conservation on agricultural land by creating incentives and breaking down barriers.



### INSPIRE

We find and promote the stories of leading land stewards whose conservation successes inspire others.



Farmers and ranchers need reliable information about rotational grazing their livestock on cover crops. Sand County Foundation is researching the economic and environmental benefits of this conservation practice. This work with experienced graziers in an environmentally-sensitive region is made possible thanks to a North Central Sustainable Agriculture Research and Education grant. The case studies we produce will help reduce the trial and error of this conservation practice for farmers and ranchers across the country.



PHOTO: DARREN YANKE



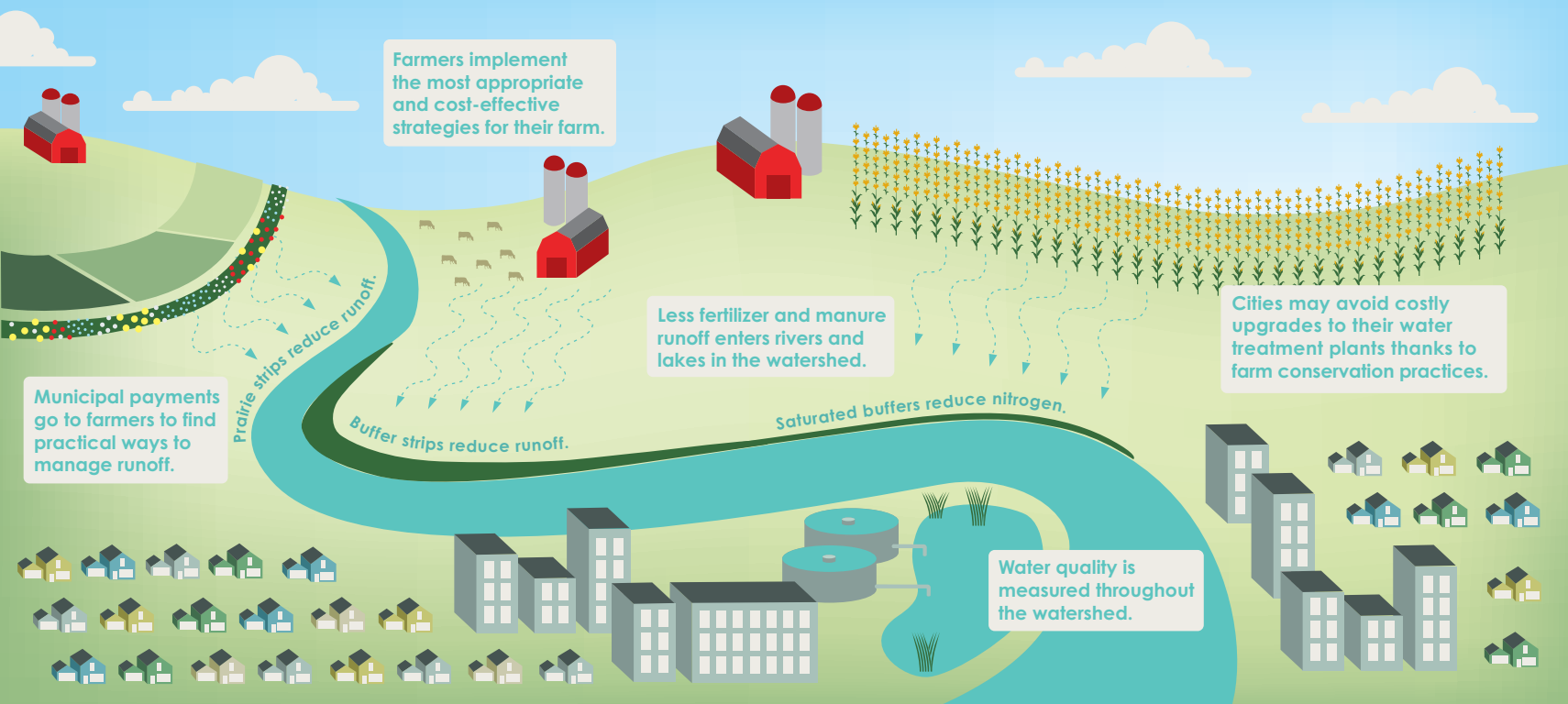
**A pandemic couldn't stop our pollinator habitat grant program.** Despite virtual classrooms, we supplied agriculture and science teachers in three states with native wildflower seedlings, a training webinar and \$1,000 grants to engage students in establishing habitat on local farmland for insect pollinators and imperiled monarch butterflies.

Our innovative work in the community of Grafton shows how municipalities and farmers within a shared watershed can use **conservation practices to protect water quality while reducing infrastructure costs.** Last year these efforts saved more than 1,000 pounds of phosphorus from entering the Milwaukee River. With renewed funding from Fund for Lake Michigan in 2020, we will scale-up this effort to expand the benefits into more watersheds.

Our on-the-ground work with landowners is part of growing movement that shows how **planting native grasses and wildflowers next to crop fields** can reduce soil erosion, improve water quality and provide wildlife habitat. These prairie filter strips were the topic of our first-ever virtual field day in 2020.

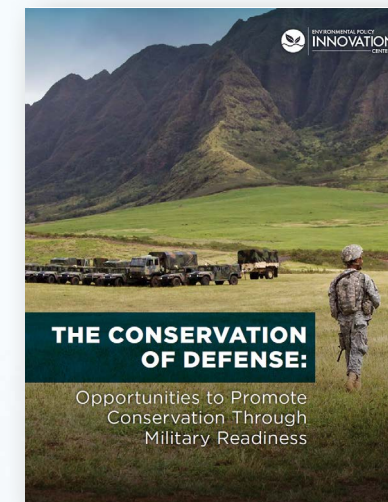
Our Leadership for Midwestern Watersheds forum is an annual event for conservation professionals that promotes collaboration to scale-up project success and accelerate **measurable water quality improvements.** Our pivot to a virtual event was a success, with a record number of attendees tuning in to learn about effective communication in challenging times. We also surveyed more than 100 watershed project leaders to explore their professional development needs.





## Securing Urban/Rural Partnerships for Better Water Quality:

We all want and need clean water, so Sand County Foundation and the Environmental Policy Innovation Center are leading an effort to forge partnerships between municipalities in the Mississippi River Basin and the farmers in their watershed to improve water quality and save taxpayer dollars. Through specially-drafted agreements, these **municipal/agricultural partnerships** provide an avenue for municipal water treatment plants to achieve their clean water discharge requirements by investing in conservation practices on nearby farms. Thanks to these creative agreements, cities may be able to avoid making costly upgrades to their water treatment plants, and usually can achieve compliance at less cost. The benefits are not just economic. Relationships form between urban and rural citizens; improved water quality helps many drinking water utilities; and farm conservation practices often improve wildlife habitat, reduce flooding and improve the farm's bottom line. With funding from the Walton Family Foundation, we secured three such partnerships in Iowa in 2020, with many more on the horizon in other states in the region.



The Department of Defense (DoD) manages some of the most valuable land in the U.S. for conservation biodiversity and fresh water. In the coming decades, it will need more land, air, and ocean space to accommodate hypersonic weapons and other technological advances. These changes will likely result in the DoD needing to manage, access, or put use restrictions on millions of additional acres beyond the 27 million acres under its control today. **Agriculture and conservation lands can make the best neighbors for Department of Defense** activities, so there are many win-win outcomes possible in the future. The Environmental Policy Innovation Center (EPIC), a fiscally sponsored program of Sand County Foundation, issued recommendations for DoD that include making improvements to Endangered Species Act policies that incentivize the military to restore or enhance species in one area in exchange for flexibility in using other areas for more significant training. Another recommendation seeks expanded funding for a program DoD can use to protect farmland and rangeland from development. [Visit sandcountystation.org/publications-for-the-full-report](https://sandcountystation.org/publications-for-the-full-report).

Working with partners and legislators, the EPIC team put together the first-ever **Comprehensive Conservation Finance Legislation** in Maryland that will serve as a model for other states. The bill, which has bi-partisan support, would make more than a dozen changes in state programs leading to private investment in efforts to improve water quality and address climate change and other issues. The legislation would make Maryland the first in the nation to define "blue infrastructure," put environmental outcomes into state contracting, create a comprehensive approach to state procurement that pays for success, and build the value of natural assets into local government balance sheets.





## Leopold Conservation Award

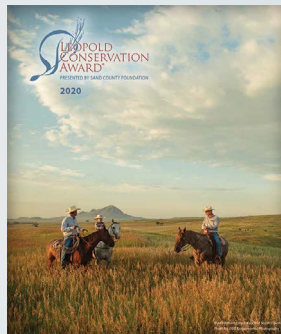
Sand County Foundation launched the Leopold Conservation Award Program nearly 20 years ago in Colorado to recognize and celebrate landowners for their achievements in conservation success.

American Farmland Trust became our national sponsor, joining dozens of state-level partners and sponsors who present the award with us in a growing number of states.

In 2020, a diverse and inspiring group of award recipients joined an alumni network that recently grew to 150 strong. They include landowners who manage cranberry bogs in New England, milk cows in Pennsylvania, graze cattle on the Great Plains, and care for almond groves in California.

The award expanded to New York in 2020, and we will welcome the first recipients from New Mexico and Maryland in 2021.

**READ AND WATCH**  
the stories of each  
2020 Leopold Conservation  
Award recipient at  
[sandcountyfoundation.org/LCA20](https://sandcountyfoundation.org/LCA20)



## Land Ethic Mentorship

For Historically Underserved Farmers & Ranchers

Underserved farmers and ranchers in the U.S. stand to gain from Sand County Foundation's **Land Ethic Mentorship Program** launched this year. It links our tremendous network of Leopold Conservation Award alumni with historically underserved farmers and ranchers including beginners, socially disadvantaged minorities, military veterans new to farming, and those with limited resources. Research shows these individuals often farm on environmentally-sensitive land. Being connected with mentors to offer advice on conservation practices and programs can build confidence that benefits their business and the landscape.



# 2020

BY THE NUMBERS

NEARLY  
1000  
HOURS OF  
ONE-ON-ONE  
FARMER  
OUTREACH

OUR CONSERVATION MESSAGES WERE  
SEEN MORE THAN

55  
MILLION  
TIMES



THROUGH MEDIA COVERAGE ACROSS THE U.S.

► MORE THAN  
200

DIVERSE PARTNERS AND SPONSORS  
MADE THE LEOPOLD CONSERVATION  
AWARD PROGRAM POSSIBLE IN

20  
STATES



# 120

WATERSHED  
LEADERS FROM  
8 STATES  
ENGAGED IN OUR  
12TH ANNUAL  
(FIRST VIRTUAL)  
LEADERSHIP FOR  
MIDWESTERN  
WATERSHEDS  
\* FORUM \*

# 150

ENGAGED STUDENTS IN  
HANDS-ON POLLINATOR  
HABITAT PLANTING.

OUR AGRICULTURAL CONSERVATION TEAM GAVE

# 30 INVITED PRESENTATIONS

TO LOCAL, STATE AND NATIONAL AUDIENCES.

MORE  
THAN  
24

WEBINARS, VIRTUAL FIELD DAYS, AND  
VIRTUAL LANDOWNER RECOGNITION EVENTS.



LEOPOLD CONSERVATION AWARD RECIPIENTS NOW MANAGE  
OVER 3 MILLION ACRES



## THANK YOU TO OUR 2020 DONORS AND PARTNERS!

Donors support Sand County Foundation's work to advance voluntary conservation on private land and find solutions to some of the most pressing environmental issues we face. We gratefully acknowledge those who generously donated in 2020 and those who have continually supported us over the years.

AgriBusiness Association of Kentucky  
Greg Alexander  
Helen Alexander  
Alliance for the Chesapeake Bay  
Alliance for the Future of  
Agriculture in Nebraska  
Cheryl & Donovan Alves  
Amazon Smile Foundation  
American AgCredit  
American Farmland Trust  
Hannah Anderson  
APEX Clean Energy  
Steven Apfelbaum  
Association of Missouri  
Electric Cooperatives  
Audubon Dakota  
Audubon Nebraska  
Bad River Ranches  
Basin Electric Power Cooperative  
Ramona & Lee Bass  
Kenneth L Bates  
S.D. Bechtel Jr. Foundation  
Mary Behm

Belle Fourche River  
Watershed Partnership  
Benevity  
Mike Bleech  
Anne Bolz  
James C. Boyce, Jr.  
Brenda & Donald Boydston  
Bradley Impact Fund  
Dorothy Bradley  
Abby & Mike Brand  
George Brown  
Nancy & James Bruins  
Darla & Homer Buell  
Tina Buford  
BuhlerPrince Inc.  
Ingrid C. Burke  
Burleigh County Soil  
Conservation District  
Sue & Tom Bush  
Thomas Caldwell  
California Farm Bureau Federation  
California LCA Recipient Alumni  
Amy & Gary Cammack

Laurel Campbell & Scott Dahlberg  
Cargill  
Clare & Matthew Carlson  
Susan & Stephen Carpenter  
Kim & Dick Cates  
Jan & William Cato  
Center for Growth and Opportunity  
Chesapeake Conservancy  
Chicago Capital LLC  
Phyllis Lucas & Odin Christensen  
Constance R Coleman  
Ann & Reed Coleman  
Colorado Cattlemen's Agricultural  
Land Trust  
Colorado Cattlemen's Association  
Colorado State University Extension  
Compeer Financial  
ConocoPhillips  
Jennifer & Kevin Conrad  
Conservation Technology  
Information Center  
Cornell Cooperative Extension  
Corteva

Cow Chip Ranch  
CropLife America  
Helen & Lewis Crouch  
Culver's  
Amy & Jay Czarapata  
Dairy Farmers of Wisconsin  
Dairyland Power Cooperative  
Daybreak Ranch  
Jeanne & Duane Dederich  
Nancy & Marc DeLong  
Delta Waterfowl  
Diane Derouen & Glenn Chambliss  
Jean & Harvey Dooce  
Gina Droessler  
Ducks Unlimited, Inc.  
Andrew M. Duda  
John P. Duncan  
Ecosystem Services Market  
Consortium (ESMC)  
Signe & Gerald Emmerich  
Emmons County Soil Conservation District  
Enel Green Power  
Daniel Engstrom & Barbara Coffin  
Environmental Consulting & Technology  
Environmental Incentives  
EPRI  
Evergy  
Farm Credit  
Farm Credit Associations of Kansas  
Farm Credit East  
Farm Credit Mid-America  
Teresa & Ryan Fieldgrove  
First Dakota National Bank  
Paul Francis  
Fund for Lake Michigan  
Deirdre Garton  
Bob Giacomini  
Deanna & John Gore  
Green Cover Seed  
Green Lake Sanitary District

Janet & John Green  
Janice Grutzner  
Dayle Keitel-Haglund & Brent Haglund  
Kurt Haglund  
Sarah Hamer  
Alan Haney  
Bryan Hanson  
Jonathon Haufler, Ph.D.  
George Hawkins  
Suzanne & Tom Hefty  
Hinrichs Foundation  
Holistic Management International  
Hull Forestlands LP  
Ann & David Ingram  
Iowa Soybean Association  
Iowa State University  
Linda Irving  
ITC Great Plains  
Rebecca & Dean Jackson  
Bruce Jacobs  
Susan & Thomas Jarona  
John J. Frautschi Family Foundation  
Dolores C. Johnson  
Jean & Scott Johnson  
Tom Johnson  
Elizabeth Jones  
Kansas Association of  
Conservation Districts  
Kansas Dept. of Agriculture,  
Division of Conservation  
Kansas Dept. of Wildlife,  
Parks and Tourism  
Kansas Forest Service  
Kansas LCA Recipient Alumni  
Liina Keerd  
Mike L. Keiser  
Laurie & Bill Keitel  
KEM Electric  
Kentucky Agricultural Council  
Kentucky Association of  
Conservation Districts

Kentucky Cattlemen's Association  
Kentucky Corn Growers Association  
Kentucky Department of Agriculture  
Kentucky Dept. of Fish &  
Wildlife Resources  
Kentucky Farm Bureau Federation  
Kentucky Pork Producers  
Kentucky Soybean Promotion Board  
Kentucky State University  
Kentucky Tree Farm Committee  
Kentucky Woodland Owners Foundation  
Pamela & Jeffrey Kochel  
Kollath & Associates  
Kopriva Angus LLC of Raymond,  
South Dakota  
Gregory Lang  
Amanda & Casey Langan  
Myrna & David K. Langford  
Mary Cole-Laub & John Laub  
Stephanie Lauth  
David Liebl  
Jen Livsey  
B. Murray Lloyd  
Madison Kipp Corporation  
Norma & John Magnuson  
Toni & Dave Mathis  
Mazarine Ventures  
Tricia Wheeler & Kevin McAleese  
Debra & Timothy McCue  
McDonald's USA  
McKnight Foundation  
Craig McNamara  
Mike McNerney  
MFA, Inc.  
Kathleen Milbrath  
Millborn Seeds  
Matt Miller  
Milwaukee Metropolitan  
Sewerage District  
Missouri Association of Soil &  
Water Districts





- Missouri Cattlemen’s Association

Missouri Corn Merchandising Council

Missouri Department of Conservation

Missouri Farmers Care Foundation

Missouri Soil & Water Conservation Program

Missouri Soybean Association

Missouri Soybean Merchandising Council

Montana Chapter, Soil and Water Conservation Society

Montana Chapter, The Wildlife Society

Montana Department of Agriculture

Montana Department of Natural Resources & Conservation

Montana Farm Bureau Federation

Montana Grazing Lands Conservation Initiative

Montana Office of the Governor

Montana Rangeland Resources Committee

Mark & Dina Moore

Mor-Gran-Sou Electric Cooperative

Debra & Todd Mortenson

Catherine & Birch Mullins

Jodelle & Joel Myrold

Michael Nadler

Natural Resources Conservation Service

Natural Resources Foundation of Wisconsin, Inc.
- Nebraska Department of Agriculture

Nebraska Environmental Trust

Nebraska Game and Parks

Nelnet Foundation

New England Forestry Foundation

New York State Agribusiness Association

New York State Department of Agriculture and Markets

Martha & Joseph Nielsen

Noble Research Institute

North Central Region Water Network

North Dakota Association of Conservation Districts

North Dakota Chapter, The Wildlife Society

North Dakota Game & Fish Department

North Dakota Grazing Lands Coalition

North Dakota Natural Resources Trust

North Dakota Stockmen’s Association

Northwest Farm Credit Services

Scott O’Brien

Oklahoma Association of Conservation Districts

Oklahoma Cattlemen’s Association

Oklahoma Conservation Commission

Oklahoma Farm Bureau Foundation for Agriculture

Oklahoma State University
- Diane & Dave Olenchek

Open Environmental Data Project

Patrick & Sharon O’Toole

Ozaukee County, Wisconsin

Laurie & William Paulos

Pennsylvania Association of Conservation Districts

Pennsylvania Department of Agriculture

Pennsylvania Farm Bureau

Sara & Craig Pereira

Perkins Coie LLP

Terry Peters

Pheasants Forever, Inc.

Pisces Foundation

Producers Livestock Marketing Association

Rainwater Basin Joint Venture

Ranchers Stewardship Alliance

Ranchland Trust of Kansas

Redman Realty Group

Lee A Riordan

Robert Wood Johnson Foundation

Alice & Harvey Rottier

Roughrider Electric Cooperative

Sandhills Task Force

Sauk Soil & Water Improvement Group

Chris Schellpfeffer

Lynne Sherrod

- Jill & Tim Sherry

Sibanye Stillwater

Dale Sievert

Susan Silha

Alice Sittler

Lisa Keitel & Eric Sjostrom

Slope Electric

Society for Range Management

Soil and Water Conservation Society

South Dakota Association of Conservation Districts

South Dakota Cattlemen’s Association

South Dakota Department of Agriculture

South Dakota Department of Environmental & Natural Resources

South Dakota Department of Game, Fish & Parks

South Dakota Farm Bureau Federation

South Dakota Grasslands Coalition

South Dakota Soil Health Coalition

South Dakota Soybean Association

South Dakota State University

Phyllis & Peter Sprecher

Spring Point Partners LLC

Alli & Kartik Sribarra

Stanko Ranch

Emily Stanley

Starion Bank

Peter Stent

Susan L. Stout

Kelly Stowell

Sustainable Agriculture Research & Education

Sustainable Conservation

Syngenta Crop Protection, LLC

Suzie Paris & Richard Taylor

TD Ameritrade Clearing

Stanley Temple

Colleen Terbilcox

Texas A&M University

Texas Parks & Wildlife

The Bird Conservancy of the Rockies

- The Cynthia & George Mitchell Foundation

The Dixon Water Foundation

The Harvey L. & Maud C. Sorensen Foundation

The Heinz Endowments

The Ida and Robert Gordon Family Foundation

The Kresge Foundation

The Lyle Sittler Memorial Fund

The Lynde & Harry Bradley Foundation

The Nature Conservancy

The William & Flora Hewlett Foundation

Dianne Thompson

David B. Thompson, Jr.

Marcus Trapp

Tri-State Generation and Transmission Association

The Trust for Public Land

U.S. Department of Defense

U.S. Endowment for Forestry and Communities

U.S. Fish & Wildlife Service

United Soybean Board

University of Illinois

Utah Association of Conservation Districts

Utah Cattlemen’s Association

Utah Department of Agriculture and Food

Utah Farm Bureau Federation

Utah Wool Growers Association

Nancy Vedder-Shults

Village of Grafton

Wagner Land & Livestock

Willard T. Walker

Walton Family Foundation

Jackie Erickson & Ed Warner

We Energies Foundation

Western AgCredit

Robert Westervelt

Bill White

Whole Foods

Wilburforce Foundation

- Wildlands, Woodlands, Farmlands & Communities

Windward Fund

Wisconsin Corn Growers Association

Wisconsin Corn Promotion Board

Wisconsin Farm Bureau Federation

Wisconsin Land and Water Conservation Association

Wisconsin Potato & Vegetable Growers Association

Woodtiger Fund

World Wildlife Fund - Northern Great Plains Program

Yale School of the Environment

YourCause LLC

Tom Zale

Janis Zimmerman



Sand County Foundation is a Gold Level GuideStar participant. This means we are committed to demonstrating transparency and accountability to our donors. View Sand County Foundation’s profile on GuideStar’s website to find details about our financials, program activities and impact.



## Foundation Staff

### David Bailey

Western Director - Leopold Conservation Award

### Maureen Cunningham

Deputy Director of Water - Environmental Policy Innovation Center

### K. Bartlett Durand, Jr., Esq.

Director - Water Quality Partnerships

### Craig Ficenece

Program Director

### Katy Hansen

Senior Advisor for Water - Environmental Policy Innovation Center

### Phoebe Higgins

Director of Markets - Environmental Policy Innovation Center

### Lance Irving

National Director - Leopold Conservation Award

### Liina Keerd

Program Assistant

### Casey Langan

Communications Director

### Ya-Wei (Jake) Li

Director of Biodiversity - Environmental Policy Innovation Center

### Timothy Male, Ph.D.

Executive Director - Environmental Policy Innovation Center

### Kevin McAleese

President and CEO

### Greg Olson

Field Projects Director

### Holly Perrotti

Director of Operations

### Heidi Peterson, Ph.D.

Vice President - Agricultural Research and Conservation

### Christina Schellpfeffer

Vice President - External Relations

### Sridhar Vedachalam, Ph.D.

Director of Water - Environmental Policy Innovation Center

### Katie Ziemer

Soil Conservationist

## Board of Directors

### CHAIRMAN

#### Lynne Sherrod

Owner - Rocking U7 Ranch Colorado

### VICE-CHAIR/SECRETARY

#### David Hanson

Attorney - Michael Best & Friedrich, Wisconsin

### TREASURER

#### Homer Buell

Owner - Shovel Dot Ranch, Nebraska

#### Tina Buford

Owner - H. Yturria Ranch, Texas

#### Dick Cates, Ph.D.

Owner - Cates Family Farm, Wisconsin

#### Kevin Conrad

Entrepreneur and Conservationist, New York

#### Nancy DeLong

Agriculture Sustainability Consultant, Iowa

#### John P. C. Duncan

Attorney - Kozusko Harris Duncan, Illinois

#### Brent Haglund, Ph.D.

Chief Scientific Officer - Sand County Foundation, Wisconsin

#### Stanley Temple, Ph.D.

Professor Emeritus - UW-Madison, Wisconsin

#### Ed Warner

Geologist and Philanthropist, Colorado

#### Thomas Zale

Vice President - Real Estate - Northwestern Mutual, Wisconsin

### DIRECTOR EMERITUS

#### Indy Burke, Ph.D.

Dean - Yale School of the Environment, Connecticut



## Haglund Ecology Fund

Sand County Foundation's longtime President, Brent Haglund, who serves on our board of directors and chairs the science advisory committee, has always had an uncanny ability to inspire landowners to become better land stewards. His dedication to science-based approaches to environmental improvement grew Sand County Foundation's impact nationally and abroad.

To know Brent is to know that his interest in the natural world and his dedication to a land ethic began at a very young age. He believes conservation and environmental improvement don't need to be complicated or expensive, and that such work should be within every citizen's reach, especially young people.

The Haglund Ecology Fund, established in 2020 by Brent's siblings, will provide grants to motivate and empower land stewards, environmental educators and young people across the U.S.

---

---

### Visit [sandcountyfoundation.org/donate](https://sandcountyfoundation.org/donate)

to make a special gift in recognition of Brent's ongoing dedication to advancing science-based conservation approaches.

---

---

“Our family created the Haglund Ecology Fund to honor the life’s work of Brent Haglund, and engage teachers, students and other young leaders in environmental stewardship.”

— BRENDA (HAGLUND) CHRISTENSEN







Sand County Foundation’s work to inspire more farmers, ranchers and forestland owners to embrace conservation practices is more important than ever as an estimated two-thirds of American farmland will change hands in the coming decades. Your support, including special gifts to our Campaign for Conservation, helps us build our capacity to address critical environmental issues. [sandcountyfoundation.org/donate](https://sandcountyfoundation.org/donate)

## Financial Responsibility

### Assets

ASSETS	
Cash	416,257
Promises to Give	620,359
Accounts Receivable	97,598
Prepaid Expenses	33,812
Long-term Investments	11,090,172
Property & Equipment - Net	4,858

TOTAL ASSETS	\$12,263,056
--------------	--------------

### Liabilities and Net Assets

LIABILITIES	
Accounts Payable	63,207
Grants Payable	30,000
Other Liabilities	139,708
TOTAL LIABILITIES	\$232,915

NET ASSETS	
Without Donor Restrictions	7,900,325
Temporarily Restricted Net Assets	4,129,816
TOTAL NET ASSETS	\$12,030,141

TOTAL LIABILITIES AND NET ASSETS	\$12,263,056
----------------------------------	--------------

Sand County Foundation has always been committed to full financial transparency. The Foundation is classified as a 501(c)(3) Public Charity under IRS code. The report of an independent auditor, 2020 audited financial statements and our 2020 tax return are available at [sandcountyfoundation.org](https://sandcountyfoundation.org)

Sand County Foundation has an operating budget of approximately \$3 million. Our board-designated investments are valued at approximately \$11 million. Within our net assets are various funds we use to fund operations, invest in high-impact conservation partnerships, and expand outreach.





# In Memoriam: Reed Coleman

Reed Coleman, Sand County Foundation's Founder and Chairman Emeritus, was born in 1933 in Madison, Wisconsin, where he lived most of his life. On many weekends during elementary and high school, Reed joined his parents for the short trip north of Madison to their rural property near the banks of the Wisconsin River.

Reed's father, Tom Coleman, a Madison industrialist, was a dear friend of conservation visionary Aldo Leopold. In fact, he asked Leopold's wife, Estella, to be Reed's Godmother. Shortly after Aldo Leopold purchased his now famous Shack property, the Colemans became neighbors and partners in a land restoration effort. Tom Coleman had the practical insight to link parcels of land to enhance wildlife habitat. He and Leopold were hunting and fishing buddies who passed down to their children their love of the outdoors and interest in the natural world.

In his later years, Reed fondly recalled time spent at the Shack with some of the Leopold children. After helping to plant trees as part of the restoration of the once farmed but badly depleted properties, they played a game in the woods that they called swinging birches.

As Reed explained it, "You pick a birch tree of a certain size and suppleness, and you shimmy up it. Then you grab it with both hands and you swing out. If you've made a good decision it'll gently drop you down on to the ground, and then you can let go and it'll go back up. I hate to say it, but those wonderful Leopold children used to stick me on a stiff birch and leave me about 20 feet off the ground."

A lifelong outdoorsman dedicated to Leopold's idea of a land ethic, Reed earned a degree in ecology at Northwestern University. He graduated in 1955, and went on to serve in the United State Air Force as an intelligence officer.

In 1964, when Reed's father passed away, Reed replaced him at the helm of the family-owned business, Madison-Kipp Corporation. At 31-years-old, with a growing family of his own, he became the third generation of the Coleman family to lead the enterprise, and remained chairman of the board until 2016.

In the mid 1960s, about 15 years after the death of Aldo Leopold, floodplain lands close to the Leopold Shack were being subdivided. Reed secured voluntary agreements among

neighboring landowners to protect the Shack area from development. There was no roadmap to follow to execute such an agreement, no existing land trusts with comparable voluntary agreements to emulate. But in the end, all of the neighboring landowners signed on to create what they called the Leopold Memorial Reserve – a pioneering venture in cooperative land conservation that ultimately brought Sand County Foundation to life.

Reed's skilled executive leadership ability, shrewd intellect, unyielding commitment to sound principles, and sense of humor not only led Sand County Foundation through 50 years of improving private land conservation across the U.S. and abroad, but it made him a sought-after board member and volunteer leader of many organizations.

He also volunteered his ingenious and creative spirit to benefit numerous nonprofit and civic organizations. His commitment to measurable philanthropy in general, and to his beloved Sand County Foundation in particular, was unwavering but understated.

Reed remained active in Sand County Foundation decision-making, leadership and succession well into 2020. He died on August 17, 2020.

---

Honor Reed and the Coleman Family's conservation legacy by making a gift to the **Coleman Family Fund**. This special fund supports high-impact, entrepreneurial approaches to conservation on working land.

**[Visit sandcountyfoundation.org/donate](https://sandcountyfoundation.org/donate)**

---







“It is the individual farmer who must weave the greater part of the rug on which America stands.”

-ALDO LEOPOLD